

C2 Updater Installation Guide



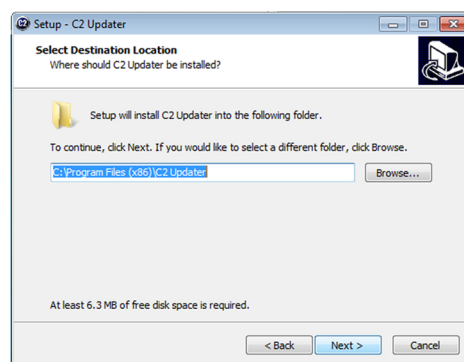
The C2 updater can be downloaded via the following link: <http://support.connects2.com/swupgrade/setup.php>
Please follow the on screen instructions to install the C2 Updater. Please ensure that the program is installed before connecting your programmer and interface.



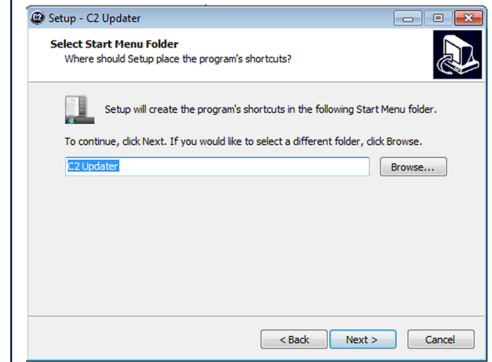
1 Open the C2 updater setup Wizard.
This will install C2 Updater Version 1.0

It is recommended that you close all other applications before continuing.

Click 'Next' to continue

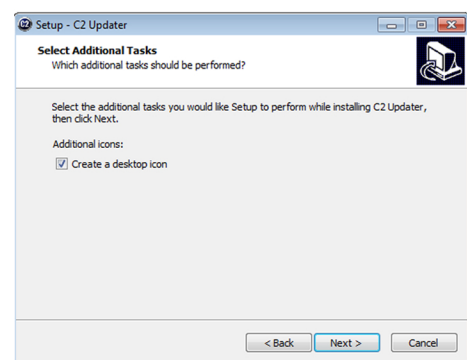


2 Select the destination location where the C2 Updater will be installed. To change location click 'browse'. Once selected click 'Next' to continue



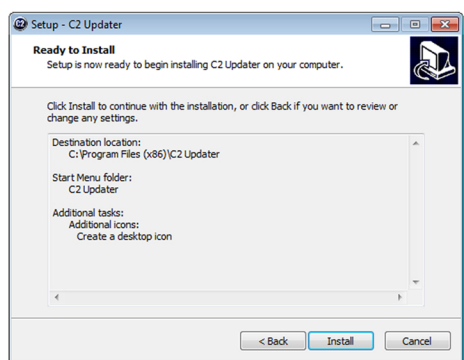
3 Select start menu folder. This will select where to place the program's shortcuts. Setup will create the program's shortcuts in the start menu. Click browse to select a different folder.

Click 'Next' to continue

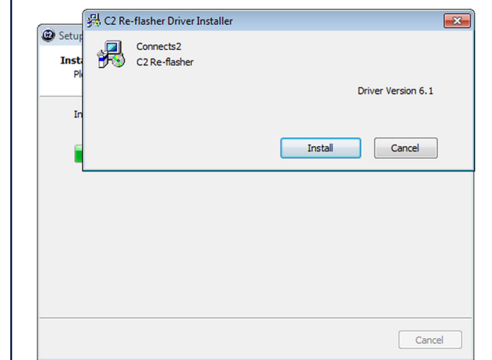


4 Select the additional tasks you would like setup to perform. This will create a desktop icon if selected

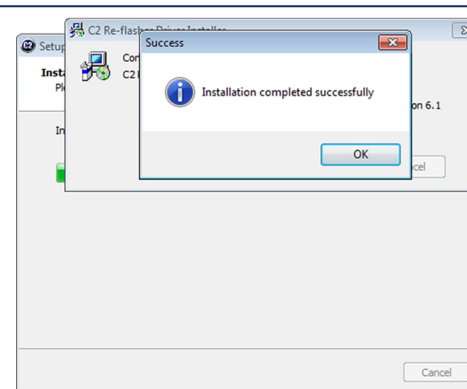
Click 'Next' to continue



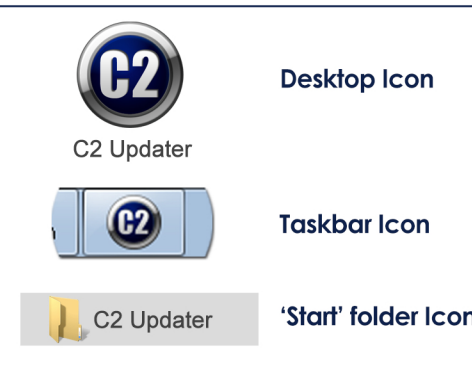
5 C2 Updater is now ready to install. Click 'Install' to continue or 'Back' if you want to review or change any settings.



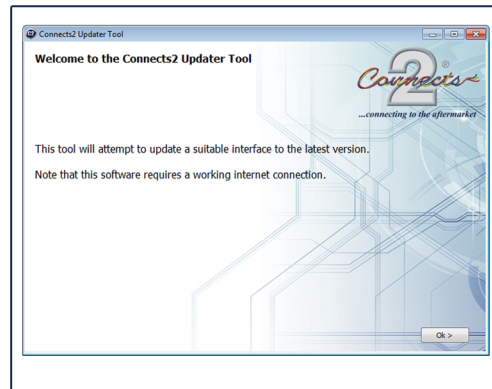
6 Click 'Install' to confirm installation of the C2 Programmer.



7 Once installation is complete you will get the following message. Click OK to close. C2 Updater is now installed on your computer.



8 Now Installation is complete you will be able to open the C2 Updater by clicking on one of the following startup icons.



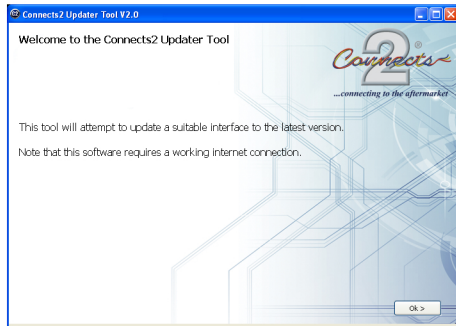
9 Connects2 Updater tool is now open and ready to use. Simply follow the on screen instruction or our C2 Updater program instructions to update your SWC2 interface.

C2 Updater

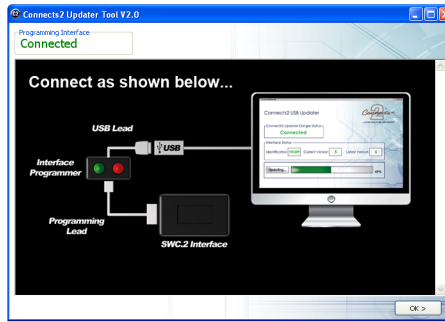
Updating the Interface



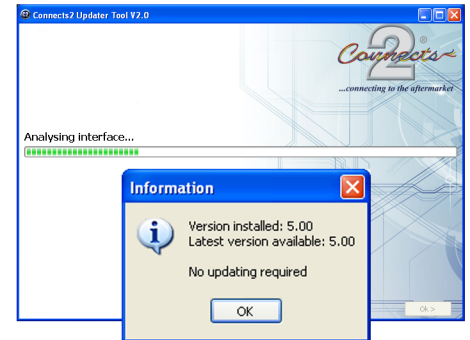
A USB A/B (Printer Cable) is required to connect the C2 reflasher to your computer.



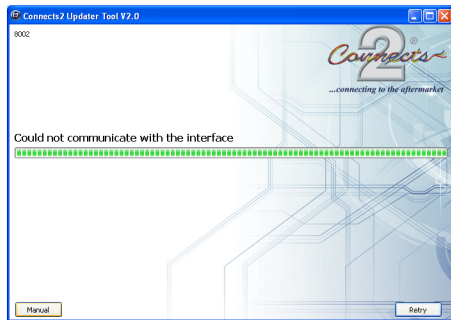
- 1 Open the C2 updater tool. Ensure you have a working internet connection. Click 'OK'.



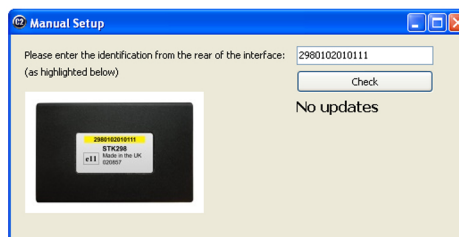
- 2 Connect the C2 upfater tool to your computer. Use the lead labelled 'PROG LEAD 2' initially. The box in the top left hand corner will show you when the computer has detected the C2 updater tool.



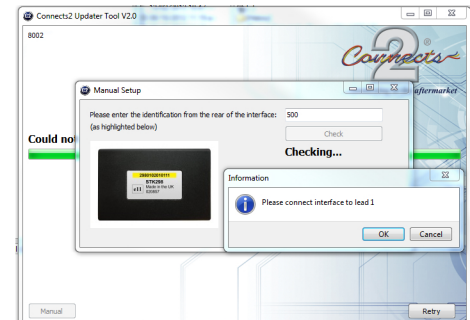
- 3 The C2 updater will check the current software installed and check to see if there is a newer version available. Click 'OK' to update the interface. If no update is required, a message will be displayed.



- 4 If the message 'Could not communicate with the interface' is displayed, you may need to use the lead labelled 'PROG LEAD 1'. Click 'Manual' if the bottom left corner of the screen.



- 5 Enter the 13 digit number on the sticker on the back of the Connects2 interface. Click 'Check'.



- 6 The updater tool will check to see if the correct lead is being used. If the correct lead is being used this will also check the software.